

Drug-Related Statistics 2022

(January to October)

Drug Related Arrests by Drug

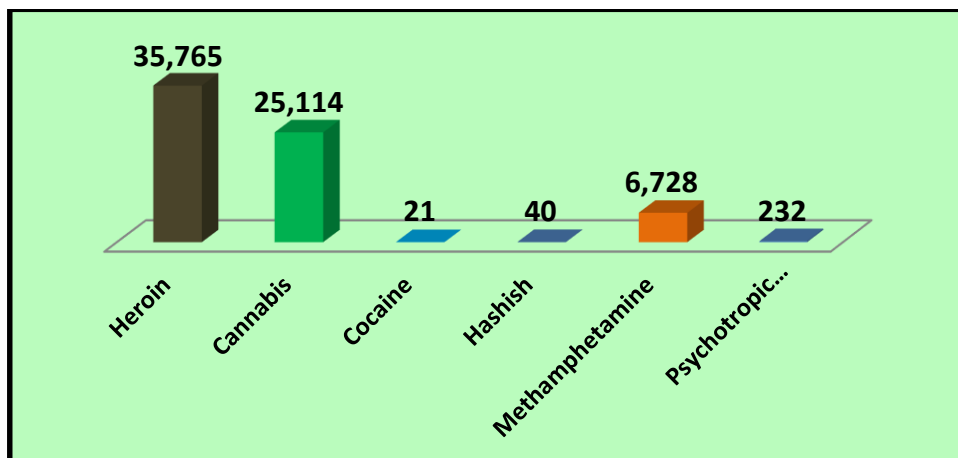
The total number of persons of drug-related arrests was 67,900 from January to October 2022. Of the drug-related arrests 35,765 (52.6%) offenders were for heroin and 25,114 (36.9%) for Cannabis. 232 persons for Psychotropic substances, 21 persons for cocaine and 40 persons for hashish were arrested from January to October 2022.

Table 1- Drug-Related Arrests by Drug

Type of drugs	Frequency	%
Heroin	35,765	52.6
Cannabis	25,114	36.9
Cocaine	21	0.03
Hashish	40	0.05
Methamphetamine	6,728	10
Psychotropic substances	232	0.3
Total	67,900	100

Source: Police Narcotics Bureau

Graph No: 01 - Drug Related Arrest by Drug



Source: Police Narcotics Bureau

Seized Quantity of Drugs (Kg)

The total quantity of heroin seized Island-wide was 1046.034 kg and quantity of the cannabis seized Island-wide was 10214.174 kg in addition 102.180 kg of Methamphetamine was seized from January to October 2022.

Table 4- Seized Quantity of Drug (Kg)

Drug	Seized quantity (kg)
Heroin	1046.034
Cannabis	10,214.174
Cocaine	370.106
Hashish	37.177
Methamphetamine	102.180
Psychotropic substances	0.141

Source: Police Narcotics Bureau

Treatment Admissions

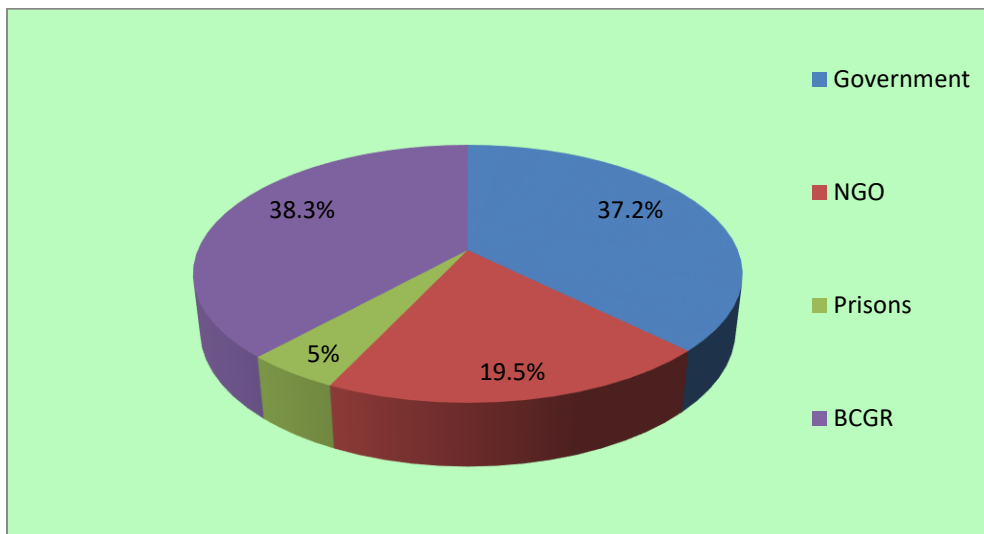
The government and non-government organizations were involved in drug treatment services in Sri Lanka. The reported number of persons who received treatment for drug dependence on Island-wide was 1381 from January to October 2022. Among them, 515 (37.3%) were reported from the treatment centers of the National Dangerous Drugs Control Board and 65 (5%) from the Prisoner Drug Rehabilitation Programme of the Department of Prisons. 269 (29.5%) were reported from NGOs or private treatment facilities. 527 (38.2%) were reported from the Kandakadu treatment and rehabilitation center of the Bureau of the Commissioner General of Rehabilitation.

Table 05 - Reported Drug Users by Treatment Facility for 2022

Facility	Government	NGO	Prisons	Kandakadu	Total
Number of treatment received persons	515	269	65	527	1376
Percentage %	37.3%	19.5%	5%	38.3%	100.0

Source: DAMS Treatment Data: 2022, NDDCB

Graph No: 04 - Reported Drug Users by Treatment Facility

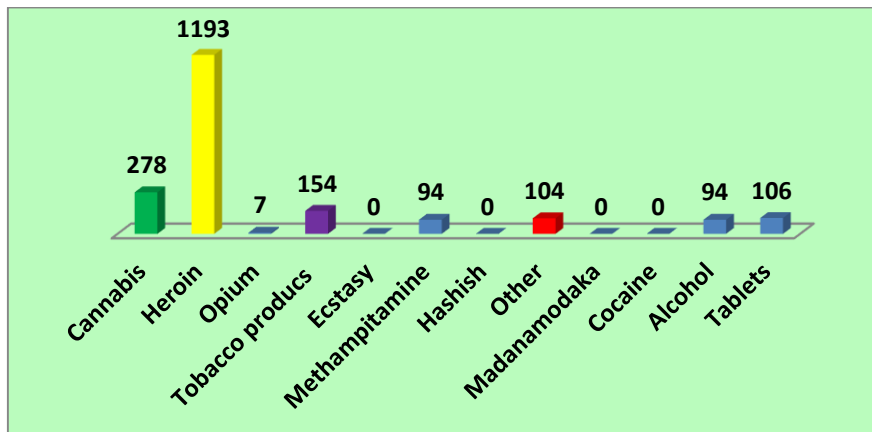


Source: DAMS Treatment Data: 2022, NDDCB

Treatment Admissions by Drug

Data indicates that most of the treatment received clients were multiple drug users. 154 used tobacco, 1,193 used heroin, and 278 used cannabis. Alcohol, tablets, and opium users are as follows, 94, 106, and 7.

Graph No: 05 - Treatment Admissions by Drug

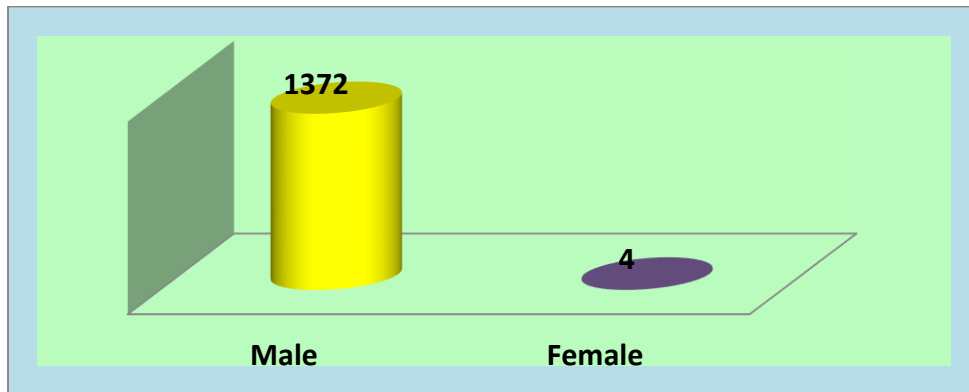


Source: DAMS Treatment Data: 2022, NDDCB

Treatment Admissions by Gender

Out of the total treatment admissions of the year 2022, 99.6% (1,372) were males. 04 (0.4%) female drug users reported.

Graph No: 06 - Treatment Admissions by Gender

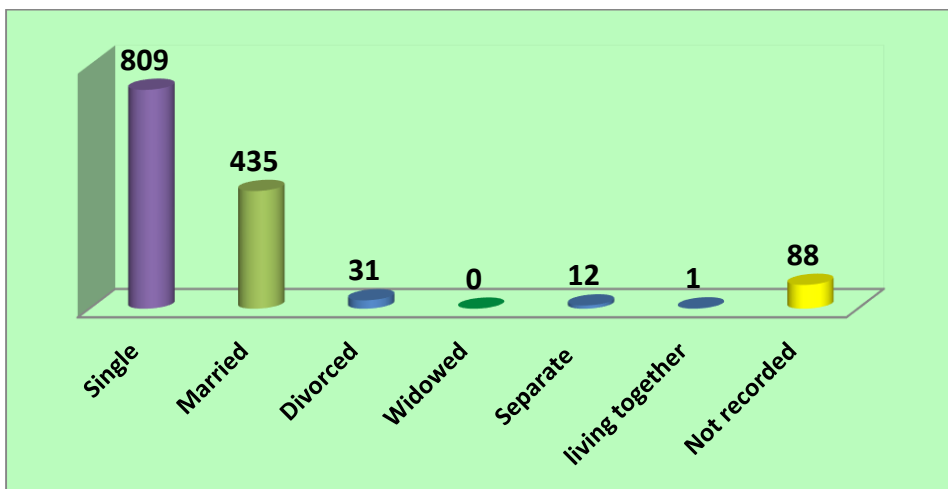


Source: DAMS Treatment Data: 2022, NDDCB

Treatment Admissions by Marital Status

Treatment received persons were further classified based on their marital status and it shows that 59% (814) were single and 32% (435) were married. In addition, divorced (31), Separated (12), and living together (01) persons were also reported.

Graph No: 07 - Treatment Admissions by Marital Status



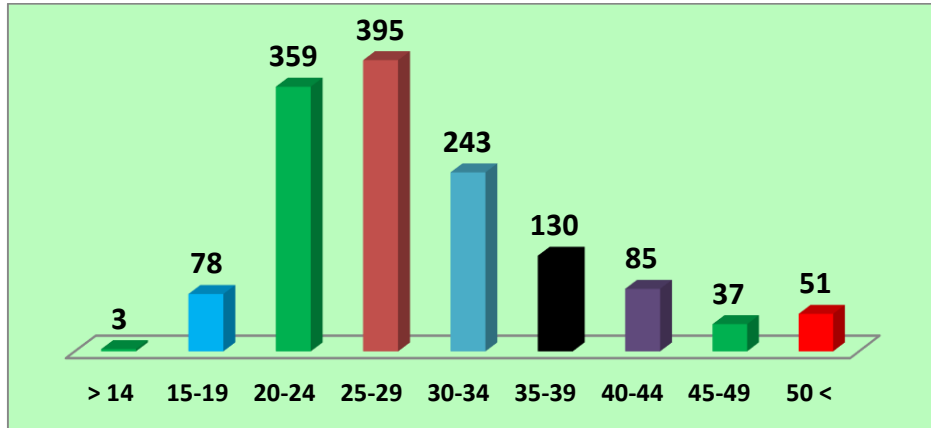
Source: DAMS Treatment Data: 2022, NDDCB

Treatment Admissions by Age

Substance abuse is an increasing global socio–medical problem among young/ adolescent males. The distribution of drug-related treatment admissions by age is shown in Graph No: 08 and it reveals that the majority, 54.4% (754), of the clients were in the age 20-29 range similar findings have been shown by the previous study conducted by the National Dangerous Drugs

Control Board. 17.6% (243), 9.4% (130), and 6.1% (85) were in the range of 30-34, 35-39 and 40-44 years accordingly. Nonetheless, 03 persons had reported for the age category of 01-14.

Graph No: 08 - Treatment Admissions by Age

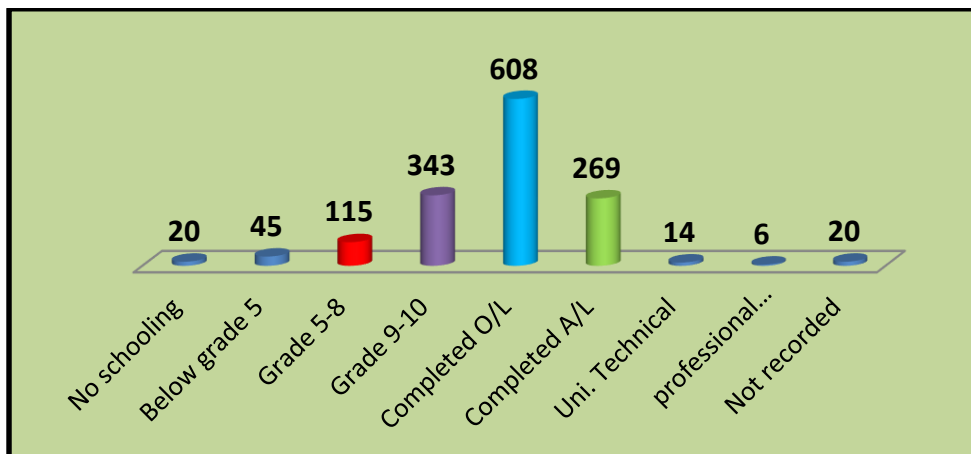


Source: DAMS Treatment Data: 2022, NDDCB

Treatment Admissions by Educational Status

The educational background of treatment persons implies that 32.7% (454) of them had a lower level of (up to grade 10) education and 01.2% (17) of the persons have never been to school. However, 44% (608) had completed O/L, 19.5% (269) completed the A/L exam, and university or technically educated 14 persons.

Graph No: 07 - Treatment Admissions by Educational Status

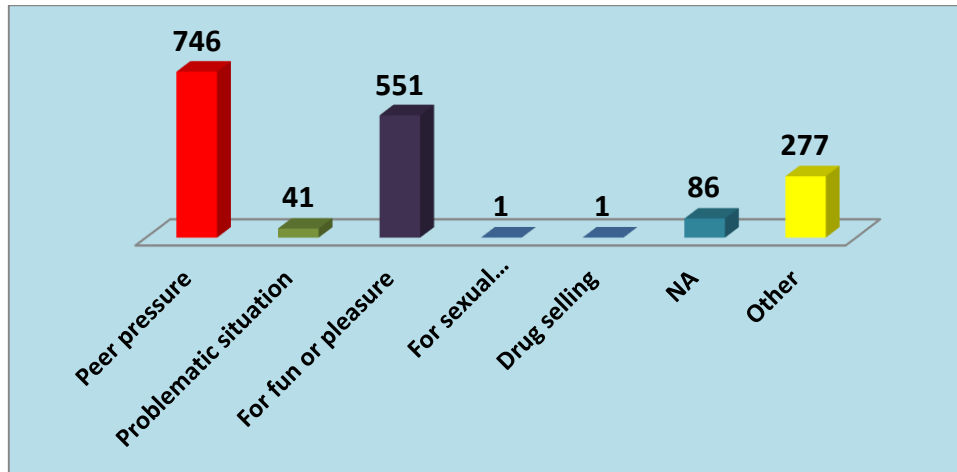


Source: DAMS Treatment Data: 2022, NDDCB

Influencing factors for drug initiation

Research currently suggests a considerable number of factors that may contribute to the initiation of drug use. SUD persons who are reported to the treatment services have shown the following factors that affected their Drug initiation. The majority (746) had initiated drug use due to peer pressure. In addition to that 551 persons were recorded for pleasure and entertainment and 41 persons had initiated drug use due to problematic situations.

Graph No: 09 - Influencing factors for drug initiation



Source: DAMS Treatment Data: 2022, NDDCB